



THEBERTON STREET, ANGEL, N1

4 BED HOUSE - TERRACED

£2,750,000

Nestled on the highly sought-after Theberton Street, this elegant mid-terrace period house offers a wonderful balance of original character and contemporary comfort. Arranged over four well-proportioned floors, the property has been meticulously maintained and thoughtfully enhanced to maximise space, natural light and day-to-day functionality.

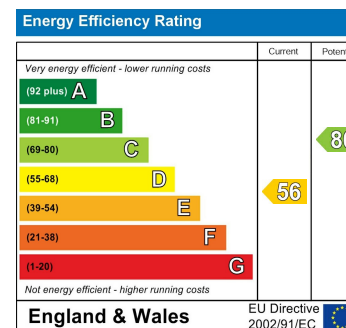
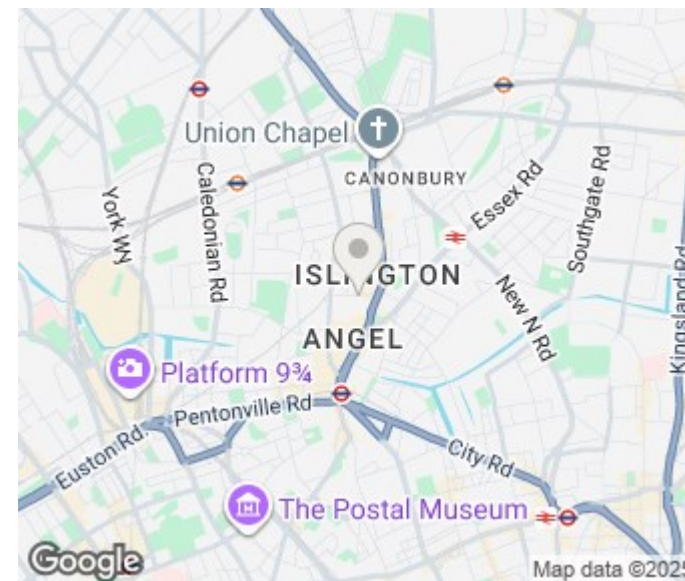
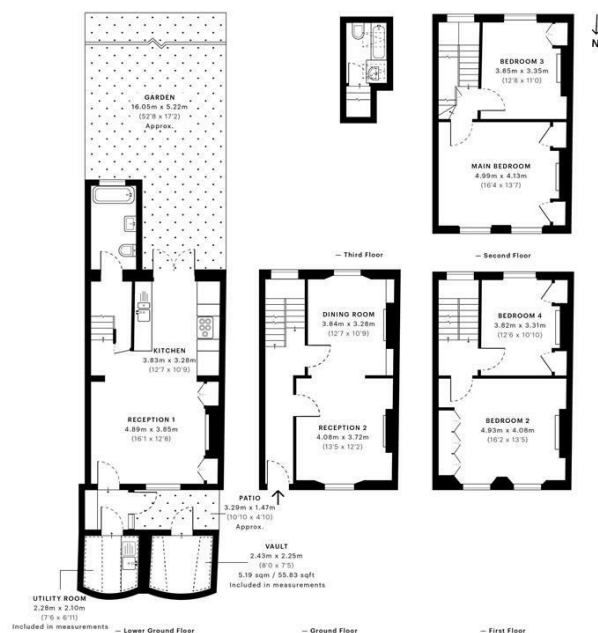
The raised ground floor provides a generous double reception room, ideal for both formal entertaining and relaxed family living, retaining charming period details while offering excellent proportions. To the rear, a large open-plan kitchen and dining area forms the heart of the home, opening directly onto a private rear garden, creating a seamless indoor-outdoor living experience perfect for summer gatherings.

The property further benefits from two modern bathrooms, extensive fitted storage throughout, and an abundance of natural light across all levels, creating a

Hemmingfords

Theberton Street, N1
CAPTURE DATE: 30/05/2022 LASER SCAN POINTS: 157759,567

GROSS INTERNAL AREA
179.95 sqm / 1936.97 sqft



Agents Note: Whilst every care has been taken to prepare these particulars, they are for guidance purposes only. All measurements are approximate and are for general guidance purposes only and whilst every care has been taken to ensure their accuracy, they should not be relied upon and potential buyers/tenants are advised to recheck the measurements

Hemmingfords Sales
34 Upper Street
London
N1 0PN

02038907470
info@hemmingfords.co.uk
www.hemmingfords.co.uk

Hemmingfords